



LEADING PARTICULARS

Maximum take-off weight	50700 lb	23000 kg
Maximum landing weight	48500 lb	22000 kg
Maximum zero fuel weight	44090 lb	20000 kg
Operational empty weight (average)	29490 lb	14500 kg
Maximum payload	14600 lb	6622 kg
Maximum fuel capacity	9385 lb	4257 kg
Maximum cruise speed	370 kt	
Maximum operating altitude	31000 ft	9450 m

AIRFIELD PERFORMANCE

SL, optimal flaps		ISA	ISA+10°C	ISA+20°C
Maximum take-off weight	lb	50700	50700	50700
	kg	23000	23000	23000
Take-off distance	ft	4005	4215	4440
	m	1220	1285	1355
5000 ft MSL, optimal flaps		ISA	ISA+10°C	ISA+20°C
Maximum take-off weight	lb	50700	50700	50700
	kg	23000	23000	23000
Take-off distance	ft	5005	5250	5595
	m	1525	1600	1705

SECTOR PERFORMANCE (50,700 lb MTOW)

SL, ISA optimal flaps, max cruise (Includes 100 nm diversion & reserves)		100 nm	200 nm	300 nm	400 nm	500 nm
Take-off weight	lb	46685	47326	47856	48441	49029
	kg	21176	21467	21707	21973	22239
Block fuel	lb	1017	1627	2131	2688	3247
	kg	461	738	967	1219	1473
Block time (4 min ground time)	min	30	47	65	82	98
Cargo	lb	14600	14600	14600	14600	14600
	kg	6622	6622	6622	6622	6622

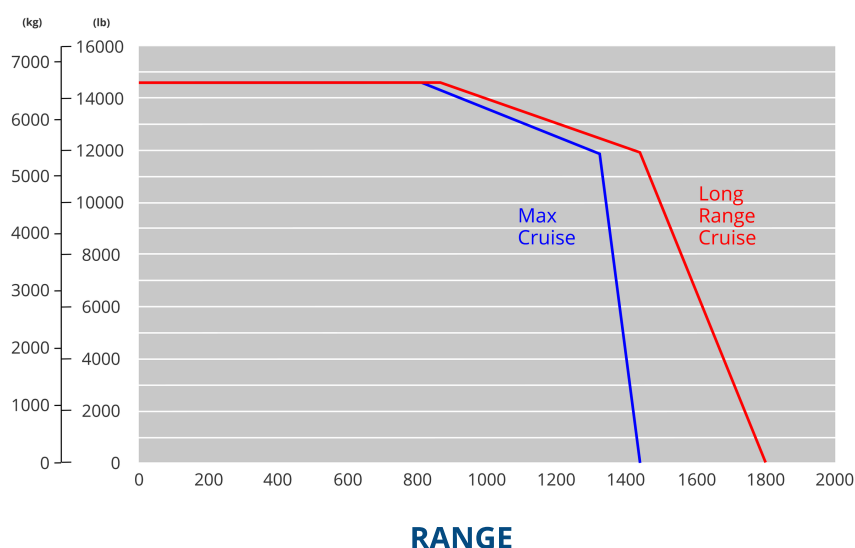
CERTIFIED NOISE LEVELS

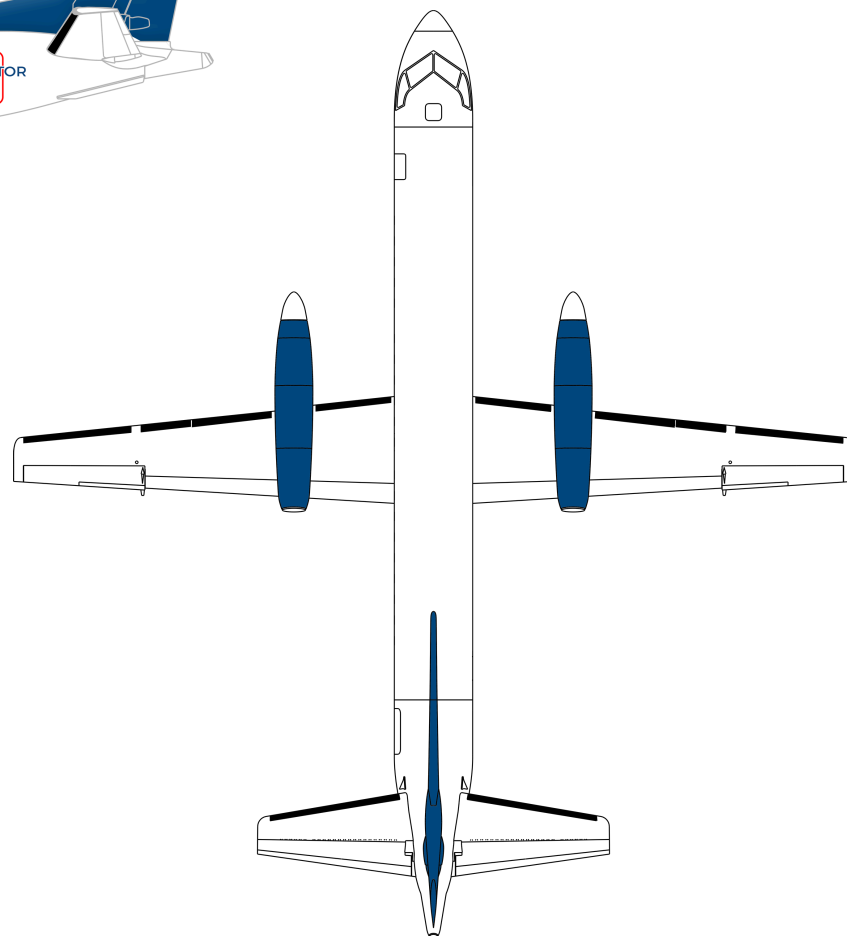
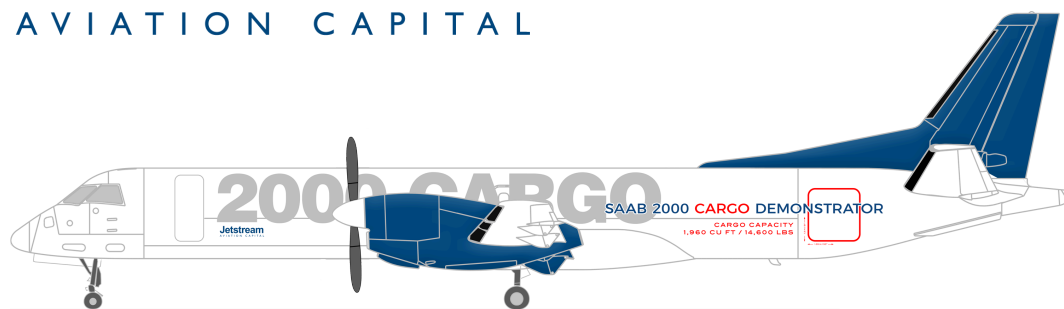
Fly-over	EPNdB	79.1
Sideline	EPNdB	86.9
Approach	EPNdB	87.9

NOTE:

All specifications, performance estimates and cabin modifications subject to finalization and certification.

PAYLOAD





LEADING PARTICULARS

Length	89 ft 6 in	27.28 m
Height	25 ft 4 in	7.73 m
Wing span	81 ft 3 in	24.76 m
Propeller ground clearance	1 ft 6 in	0.46 m
Cargo door (H x W)	51 in x 53 in	1.30 m x 1.35 m
Sill height, passenger door	5 ft 11 in	1.80 m
Sill height, cargo door	7 ft 7 in	2.31 m

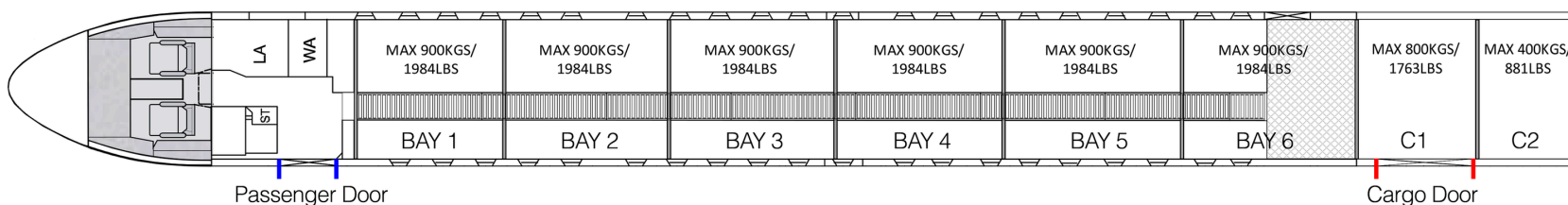
ENGINE

(2) Allison AE2100A

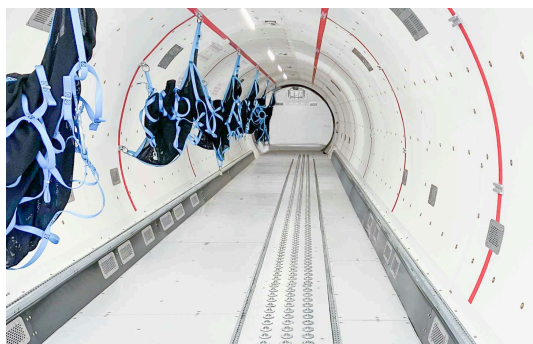
Maximum take-off power (ISA, APR) 4152 shp

Propeller Dowty Rotol

LAYOUT (TYPICAL)



	Length		Volume		Floor load limits	
Bay 1-6	49 ft 3 in	15.0 m	1660 cu ft	47.0 cu m	150 lb/sq ft	730 kg/sq m
C1	5 ft 5 in	1.65 m	177 cu ft	4.9 cu m	150 lb/sq ft	730 kg/sq m
C2	3 ft 10 in	1.17 m	123 cu ft	3.5 cu m	150 lb/sq ft	730 kg/sq m
Total	58 ft 6 in	17.82 m	1960 cu ft	55.4 cu m		



NOTE: All specifications, performance estimates and cabin modifications subject to finalization and certification.

The contents of this data sheet are based on the latest information available to Jetstream Aviation Capital. While given in good faith, it should not be taken as establishing any commitment on the part of Jetstream Aviation Capital or used for flight operations.

©2025 Jetstream Aviation Capital. May not be distributed or reproduced in whole or part without express written permission.